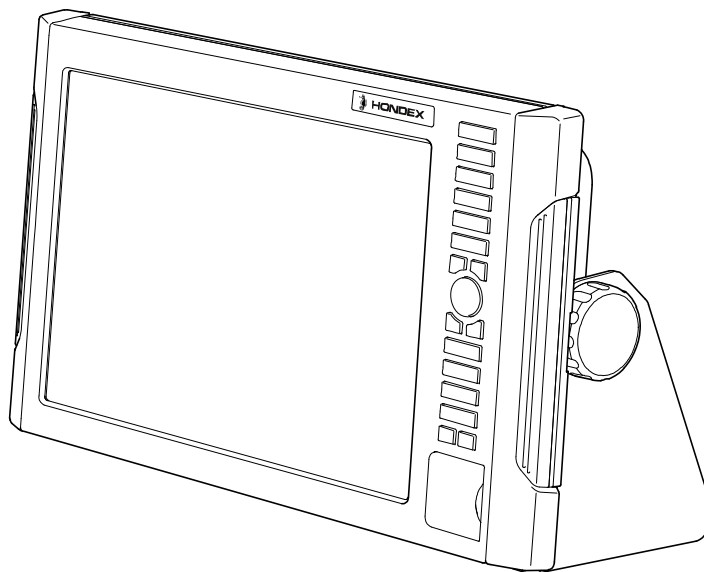


OPERATION MANUAL

(Including Guidelines for Safe Operation)

HE-1270



HONDEXTM
by HONDA ELECTRONICS

INTRODUCTION

Thank you very much for purchasing our product.

- Please be sure to read this operating manual carefully and understand the contents before the actual operation in order to keep your safety.
- Please store this manual safely at the convenient place so that you can read it when needed.
- Please pass this manual to new owner when you resell or give this unit to someone else.
- We are not responsible for any physical injuries and property damages under product liability (PL) law by wrong usage or any other operations not described in this manual.

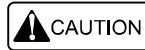
DEFINITION OF SYMBOL MARK [CAUTION FOR SAFETY]



: Incur the accident resulting in the death or serious injuries unless you keep the descriptions.



: Be in danger of incurring the accident resulting in the death or serious wound unless you keep the descriptions.



: Be in danger or incurring the slight wound to human or damage to other physical property unless you keep the descriptions.

- Do not reproduce a part or all of contents described in this manual.
- Please understand that the unit may differ from the contents described in this manual due to the specification changes etc.
- Please inform us if you see errors and/or unclear descriptions in this manual.

TABLE OF CONTENTS

| | |
|------------------------------------------------------|----|
| CAUTION ON SAFETY (BE SURE TO READ THIS)..... | 1 |
| 1. HANDLING OF MAIN UNIT..... | 1 |
| 2. HANDLING OF CABLE..... | 2 |
| 3. HANDLING OF TRANSDUCER AND WATER TEMP SENSOR..... | 3 |
| 4. TFT LCD PANEL..... | 3 |
| 5. CAUTION OF OPERATION..... | 4 |
| FEATURE..... | 4 |
| DESCRIPTIONS..... | 6 |
| 1. FRONT VIEW OF MAIN UNIT..... | 6 |
| 2. REAR VIEW OF MAIN UNIT..... | 7 |
| HOW TO SEE THE DISPLAY..... | 8 |
| HOW TO OPERATE MENU..... | 10 |

BASIC OPERATION

| | |
|-------------------------------|----|
| POWER ON / OFF..... | 12 |
| OPERATION ON FRONT PANEL..... | 13 |
| 1. DEPTH SET-UP..... | 13 |
| 2. SENSITIVITY SET-UP..... | 14 |
| 3. AUTO SET-UP..... | 15 |
| 4. FREQUENCY SET-UP..... | 15 |
| 5. MARKER OPERARTION..... | 15 |
| 6. MODE SET-UP..... | 15 |
| 7. DISPLAY SET-UP..... | 16 |
| 8. CLOAR ERASE..... | 16 |
| 9. USER KEY..... | 16 |
| 10. SCREEN BRIGHTNESS..... | 16 |
| SET FROM MENU..... | 17 |
| FREQUENCY..... | 17 |
| TRANSMIT..... | 17 |
| AUTO SET-UP..... | 17 |
| DISPLAY SET-UP..... | 17 |
| BOTTOM RING..... | 18 |
| VERTICAL BEAM..... | 18 |
| GUIDELINE..... | 18 |
| SCALE LINE..... | 18 |
| COLOR TONE..... | 19 |
| BACKGROUND COLOR..... | 19 |
| COLOR CONFIGURATION..... | 19 |
| COLOR ERASE..... | 19 |
| INTENSE LEVEL..... | 20 |
| CLUTTER..... | 20 |
| SONAR MODE..... | 20 |
| COLOR BAR..... | 20 |

| | |
|-------------------------|----|
| AUTO RANGE MAX. DEPTH | 21 |
| CLEAN ECHO | 21 |
| STC | 21 |
| OUTPUT POWER | 22 |
| TRANSDUCER INSTALLATION | 22 |
| SAVE IMAGE | 23 |
| REMOVE USB DRIVE | 24 |
| DEPTH UNIT | 24 |
| KEY BRIGHTNESS | 24 |
| LOCAL TIME CORRECTION | 25 |
| VOLTAGE CORRECTION | 25 |
| WATER TEMP CORRECTION | 25 |
| INITIAL | 25 |
| MENU | 26 |

REFERENCE DOCUMENT

| | |
|--------------------------------|----|
| DIMENSIONAL DRAWING | 29 |
| MAIN UNIT CONNECTION | 30 |
| MAIN UNIT INSTALLATION | 31 |
| BUILT-IN INSTALLATION | 32 |
| TRANSDUCER INSTALLATION | 34 |
| WATER TEMP SENSOR INSTALLATION | 36 |
| STANDARD CONFIGURATION | 37 |
| OPTIONS | 38 |
| TROUBLE SHOOTING | 39 |
| SPECIFICATIONS | 41 |

CAUTION ON SAFETY (BE SURE TO READ THIS)

This explains the important cautions in order to prevent the users and surrounding people from physical injuries and property damages.

1. HANDLING OF MAIN UNIT

DANGER



- High voltage is used for the unit inside.
No one besides authorized personnel should disassemble or modify the unit.
If not followed, it may result in electric shock.
※ Please be sure to consult with the local dealer for any repairs.

WARNING



- Install the unit firmly.
If not, it may cause the accidents such as human injuries.



- Do NOT use this unit for navigation purpose.
It may result in the accident.
※ Use official paper chart for navigation usage.



- Do NOT navigate according to the depth information on the unit.
The depth info on unit may be shown differently compared to the actual depth.
Very shallow water such as 1-2m cannot be detected depending on the conditions.



- Do NOT operate the unit while navigating.
It may result in an accident.



- Do NOT put the power on in the presence of flammable materials.
It causes the fire.



- Do NOT use the power supply besides the specified one.
It causes the firing and heating.



- Do NOT disassemble and modify the unit.
It causes the firing, electronic shock, and injury.







- Do NOT operate the unit with wet hands.
It causes the electronic shock and damage.








- Disconnect the power cable in the case of problem, smoke, and fire.
It causes the firing and electronic shock.
Be sure to contact the local shop or customer support.

CAUTION



-  •Do NOT install the unit where rain or spray dashes hit directly.
It causes the firing and electric shock.
-  •Do NOT install the unit at heated places.
It causes the firing from the increase of internal temperature, injury, and electric shock.
-  •Use the earthing.
Noise influence can be prevented by firm earthing.
-  •Away from direct sun light.
It causes the difficulty of future vision and heat problem.

2. HANDLING OF CABLE

WARNING

-  •Be sure to use the specified power supply cable.
It causes firing and heating.
-  •Do NOT leave the power plug after its removal.
It causes firing and heating if the plug gets wet.
-  •Be sure to wire the cables for safety pilot.
The improper wiring causes the accident.
※Do NOT put the heavy object on cables or bend cables excessively.
-  •Do NOT disassemble or modify the cables.
It causes firing, heating, or electronic shock.
-  •Do NOT use damaged cables.
It causes firing or electric shock.

CAUTION

-  •Do NOT pull out the cable when disconnecting the plug.
The cable damage causes firing and electric shock.
※Be sure to hold and pull the plug itself for the removal.
-  •Do NOT put any pressure on cables when installing the unit.
It causes line cut and shortage.

3. HANDLING TRANSDUCER AND WATER TEMP SENSOR

DANGER



- Any works on the vessel are very unstable and risky. Installation/maintenance of transducer and water temp sensor should be handled after landing the vessel on ground or fixing the vessel at shipyard etc

WARNING



- Water proof treatment is required for Thru-Hull installation. If not, it cause the marine accident.
※It is not allowed for aluminum vessels due to the risk of corrosion.



- Do NOT operate the electronic tools with wet hands. It cause electric shock.



- Do NOT remove the transducer plug when the power is ON. It causes electronic shock.



- Do NOT let fuel, oil, or organic solvents come into direct contact with the transducer or water temperature sensor. It causes fire or malfunction.

4. TFT LCD PANEL

- TFT LCD panel is made with high precision technology. Therefore, the effective pixel is over 99%, and pixel loss and continuous lighting pixel exist 0.01% or more. Please understand these specifications.

5. CAUTION OF OPERATION

Power OFF when Starting Engine

Battery voltage varies when the engine starts. It may cause some damages onto the unit. Set the power OFF when starting the engine.

Power Supply 11-30V

Operate the unit within the range of DC11-30V.

Organic Solution is Prohibited

Do NOT clean the unit with organic solution like thinner or alcohol etc because most parts are made with plastic. For heavy dirt, soak cloth in synthetic detergent and clean it after wring.

Do not use lubricant and anticorrosive. It may cause some damages onto the chassis and gasket.

Interference Reduction

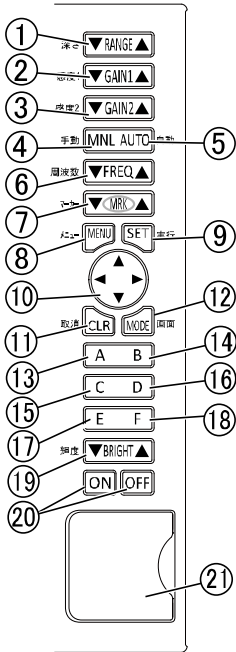
If another vessel requests interference reduction, please take measures to lower the transmission output power.

FEATURE

- ★ QUICK SCAN™ is capable of scanning all directions at once.
- ★ Auto shift/gain function allows easy operation even for beginners.
- ★ Digital processing achieves high sensitivity and effective noise reduction.
- ★ Uses optical bonding LCD technology.
- ★ The use of a wideband transducer facilitates the reduction of interference and noise caused by fish finders on other vessels.

DESCRIPTION

1. FRONT VIEW OF MAIN UNIT



① RANGE (p13)

Set the displayed depth range.

② GAIN 1 (p14)

Adjust the sensitivity of sonar when selecting manual.

Adjust the sensitivity of fish finder and sonar when selecting auto.

③ GAIN 2 (p14)

Adjust the sensitivity of fish finder when selecting manual.

④ MNL (p15)

Set manual mode.

⑤ AUTO (p15)

Set auto mode.

⑥ FREQ (p15)

Set frequency.

⑦ MRK (p15)

Adjust the marker position.

⑧ MENU (p10)

Display menu.

⑨ SET (p10)

Execution button for selection.

⑩ Direction (Up/Down/Left/Right) (p10)

When opening the menu, it moves the selected item and change the set-up.

⑪ CLR (p10)

Cancel the menu.

⑫ MODE (p15)

Switch between SONAR&SOUNDER

⑬ A (p16)

Set fish finder screen to "WIDE&SPOT"

⑭ B (p16)

Set fish finder screen to "LEFT & RIGHT"

⑮ C (p16)

Set the color erase

⑯ D (p16)

Set the color erase

⑰ E (p16)

USER KEY

⑱ F (p23)

Save image.

⑲ Brightness (p16)

Adjust the brightness of the screen.

⑳ Power On/Off(p12)

㉑ Card slot for SD and USB device

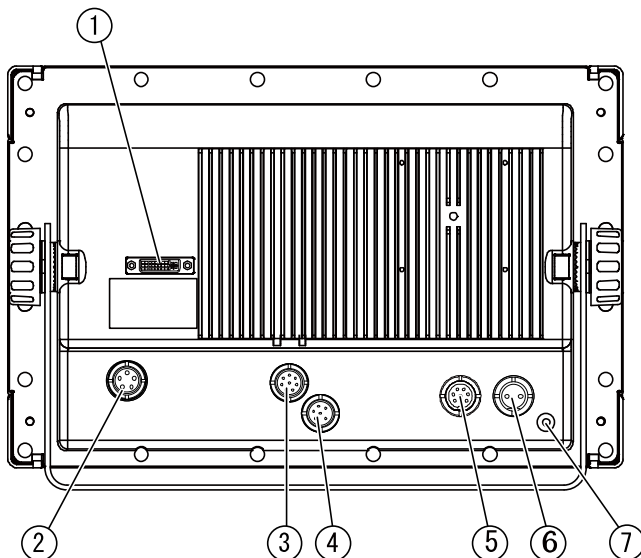
Save data to USB flash drive.

(Other USB devices are not

supported.)

※Data cannot be saved to SD card.

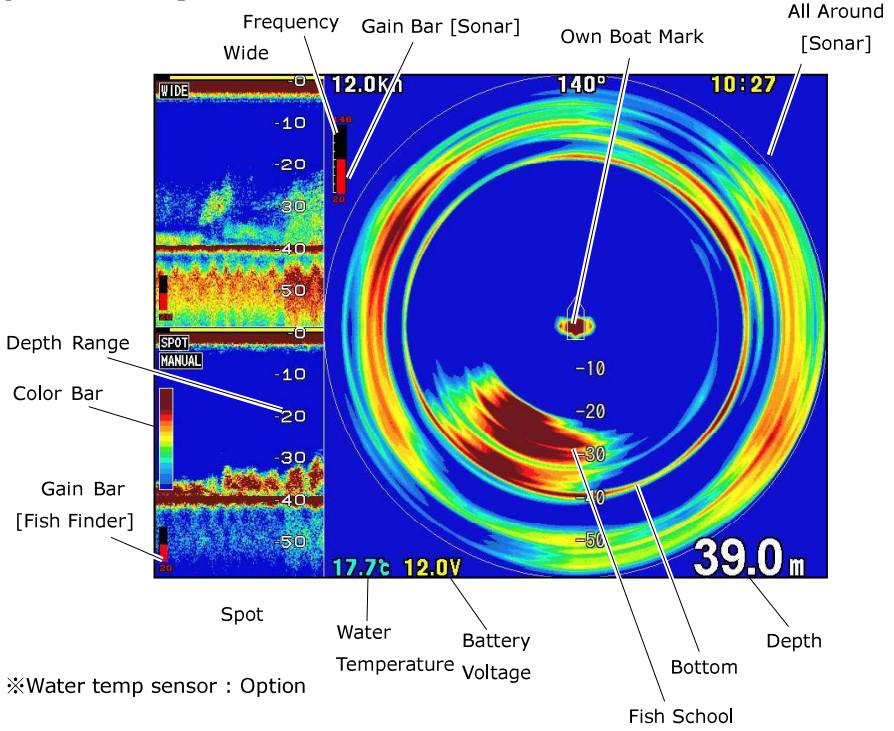
2. REAR VIEW OF MAIN UNIT



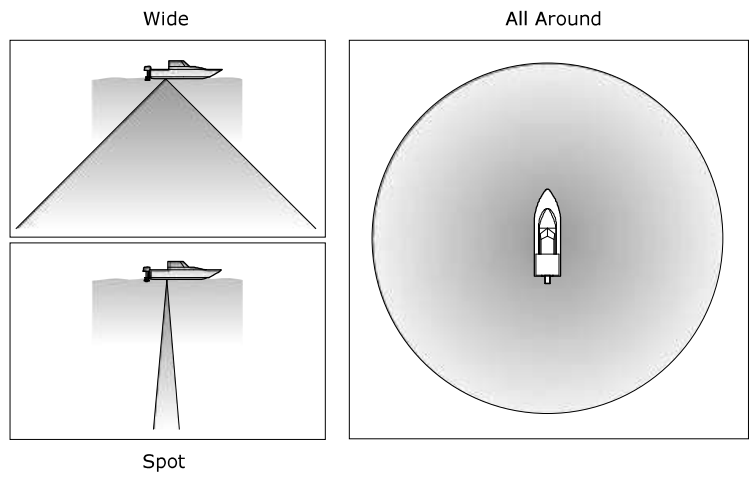
- ① DVI monitor output
- ② N/A (5P)
- ③ Water temp sensor (TEMP, 8P) (Option)
- ④ External input (6P)
- ⑤ Transducer (9P)
- ⑥ DC Power (2P)
- ⑦ Earth Terminal

HOW TO SEE THE DISPLAY

[SONAR MODE]

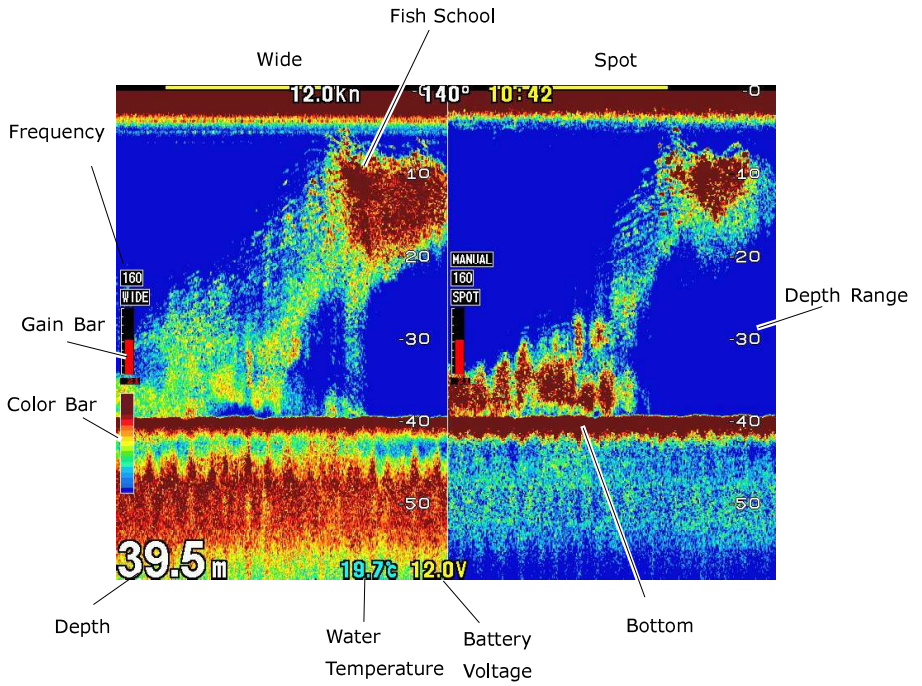


※Water temp sensor : Option



※Please refer to "SET FROM MENU" (page10) for menu operation.

[SOUNDER MODE]

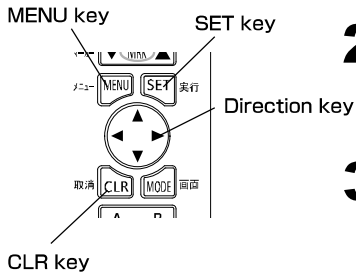


※Water temp sensor : Option

HOW TO OPERATE MENU

How to Operate Menu

Contents of items can be changed by using MENU/DIRECTION/SET/CLR keys.



1 Press MENU key.

2 Use direction key ▲ ▼ (up/down) to select.

3 Use direction key ► (right) to display next menu page.
Press MENU key to return.

4 Repeat steps "2" and "3" to reach the selection of target function.

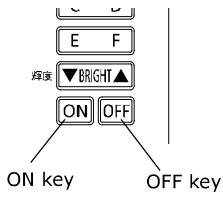
5 Press CLR key to close menu display.

BASIC OPERATION

| | |
|--------------------------------|----|
| POWER ON / OFF | 12 |
| OPERATION ON FRONT PANEL | 13 |
| 1. DEPTH SET-UP | 13 |
| 2. SENSITIVITY SET-UP | 14 |
| 3. AUTO SET-UP | 15 |
| 4. FREQUENCY SET-UP | 15 |
| 5. MARKER OPERARTION | 15 |
| 6. MODE SET-UP | 15 |
| 7. DISPLAY SET-UP | 16 |
| 8. CLOAR ERASE | 16 |
| 9. USER KEY | 16 |
| 10. SCREEN BRIGHTNESS | 16 |
| SET FROM MENU | 17 |
| FREQUENCY | 17 |
| TRANSMIT | 17 |
| AUTO SET-UP | 17 |
| DISPLAY SET-UP | 17 |
| BOTTOM RING | 18 |
| VERTICAL BEAM | 18 |
| GUIDELINE | 18 |
| SCALE LINE | 18 |
| COLOR TONE | 19 |
| BACKGROUND COLOR | 19 |
| COLOR CONFIGURATION | 19 |
| COLOR ERASE | 19 |
| INTENSE LEVEL | 20 |
| CLUTTER | 20 |
| SONAR MODE | 20 |
| COLOR BAR | 20 |
| AUTO RANGE MAX. DEPTH | 21 |
| CLEAN ECHO | 21 |
| STC | 21 |
| OUTPUT POWER | 22 |
| TRANSDUCER INSTALLATION | 22 |
| SAVE IMAGE | 23 |
| REMOVE USB DRIVE | 24 |
| DEPTH UNIT | 24 |
| KEY BRIGHTNESS | 24 |
| LOCAL TIME CORRECTION | 25 |
| VOLTAGE CORRECTION | 25 |
| WATER TEMP CORRECTION | 25 |
| INITIAL | 25 |
| MENU | 26 |

POWER ON/OFF

Power ON/OFF



1 Press & Hold ON key to turn on the power.

2 Press & Hold OFF key to turn off the power.

Caution : Set the power OFF when starting the engine because the unstable Variation of battery voltage level may cause the problems into unit.

MEMO

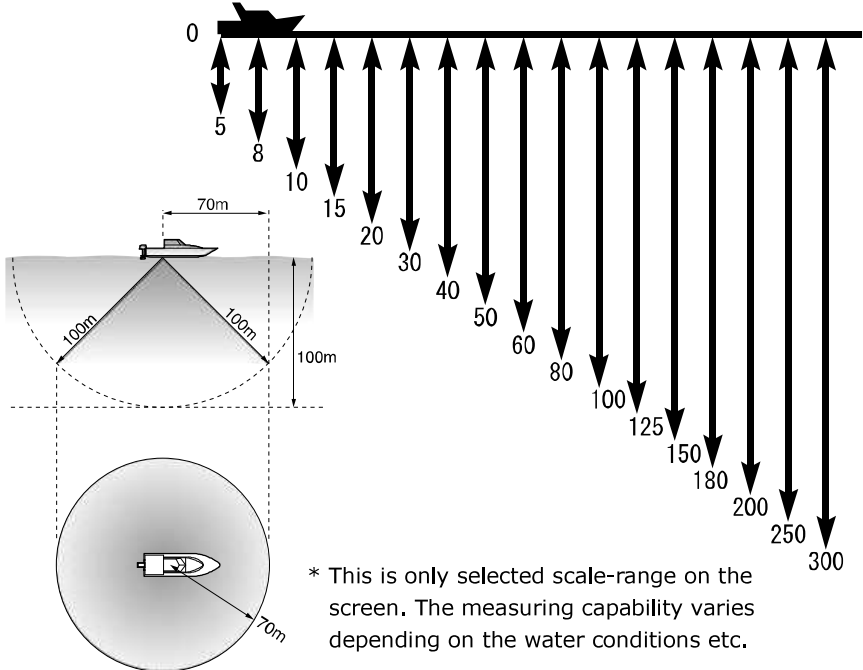
OPERATION ON FRONT PANEL

1. DEPTH SET-UP

Depth Range

[Depth]

Set the depth (display range) of how deep you want to display on the screen from the sea level.



1 [Shallow Range Direction]
Press RANGE ▲key for shallower range.

2 [Deep Range Direction]
Press RANGE ▼key for shallower range.

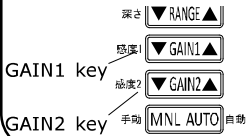
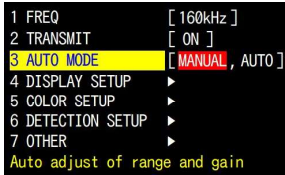
* The depth may not appear when detecting very shallow bottom with very deep range

2. SENSITIVITY SET-UP

【Whole Display Gain Adjustment】

This function helps to find the optimized gain set-up for whole image (past recording data) with easy manual operation.

2-1 Auto Mode [Manual]



1 Go to MENU - 3. AUTO MODE.

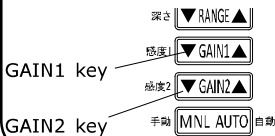
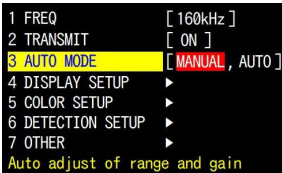
2 Select MANUAL.

3 GAIN1 for sonar screen.

GAIN2 for fish finder screens.

Both fish finder screens are synchronized.

2-2 Auto Mode [Auto]



1 Go to MENU - 3. AUTO MODE

2 Select AUTO

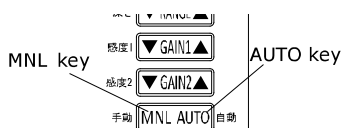
3 GAIN1/GAIN2 for the sonar and fish finder screens.

Sonar and fish finder screens are

synchronized and cannot be set individually.

3. AUTO SET-UP

Auto/Manual Set-up

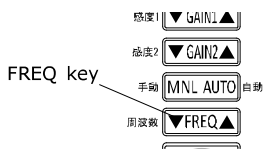


- 1 Press MNL key to set AUTO MODE to "MANUAL".
- 2 Press AUTO key to set AUTO MODE to "AUTO".

4. FREQUENCY SET-UP

Freq Set-up

Set the detection frequency

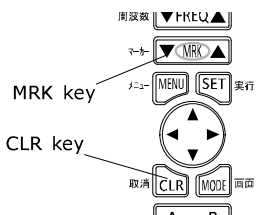


- 1 Press FREQ ▼ key to lower the sensitivity. Below 140kHz goes up to 200kHz.
- 2 Press FREQ ▲ key to higher the sensitivity. Over 200kHz goes down to 140kHz.

5. MARKER OPERARTION

Marker Set-up

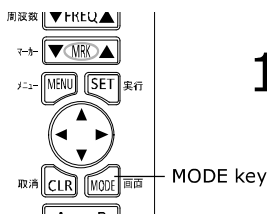
Display the depth marker.



- 1 Press MRK ▼ key to move the marker deeper.
 - 2 Press MRK ▲ key to move the marker shallower.
- Marker can be cleared with CLR key.

6. MODE SET-UP

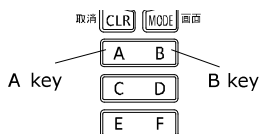
Mode Switching



- 1 Press MODE key to switch between SONAR MODE & SOUNDER MODE

7. DISPLAY SET-UP

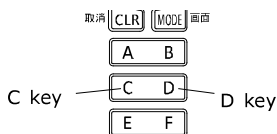
Display Set-up



- 1 Press A key to set fish finder screen to "WIDE & SPOT".
- 2 Press B key to set fish finder screen to "LEFT & RIGHT".

8. COLOR ERASE

Color Set-up

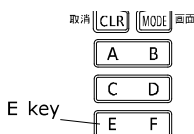


- 1 Press C key to erase the color of weakest reflection.
- 2 Press D key to re-activate the color of strong reflection.

9. USER KEY

User Key

Frequently used functions can be assigned to user keys. This is a convenient function that allows you to operate the function quickly by simply



- 1 Go to underlined MENU.
- 2 Press&Hold E key for 2 sec to assign the function.
- 3 After the beep sound, E key is shown on the left side of the selected menu

10. SCREEN BRIGHTNESS

Brightness Adjustment

Adjust the brightness of the screen.

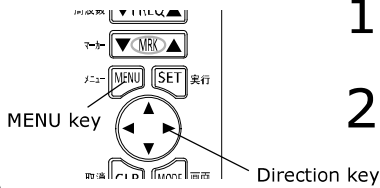


- 1 Press BRIGHT ▼ key to decrease brightness.
- 1 Press BRIGHT ▲ key to increase brightness.

SET FROM MENU

Frequency

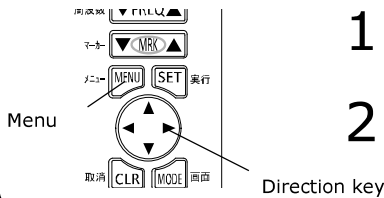
Set the detection frequency.



- 1 Go to MENU - 1. FREQ.
- 2 Select frequency from [140kHz / 160kHz / 180kHz / 200 kHz].

Transmit

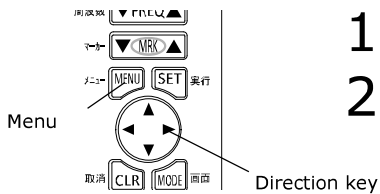
Set the transmit to "ON" and "OFF"



- 1 Go to MENU - 2. TRANSMIT.
- 2 Select [OFF] [ON].

Auto Set-up

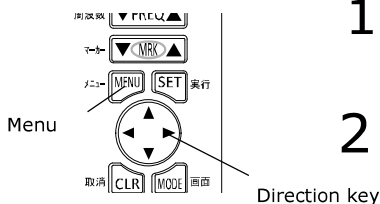
Auto adjust of range and gain.



- 1 Go to MENU - 3. AUTO MODE.
- 2 Select [MANUAL] [AUTO].

Display Set-up

Select the content to be displayed on the fish finder screen.

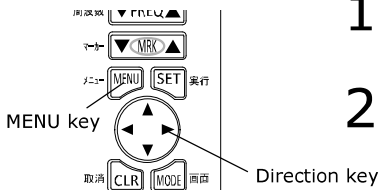


- 1 Go to MENU - 4. DISPLAY SETUP - 1.DISPLAY.
- 2 Select [LEFT | RIGHT] [WIDE | SPOT].

※Please refer to "SET FROM MENU" (page10) for menu operation.

Bottom Ring

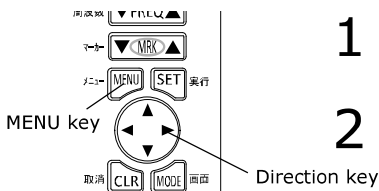
Display the depth ring on the sonar screen.



- 1 Go to MENU -
4. DISPLAY SETUP - 2. BOTTOM RING.
- 2 Select [OFF] [ON].

Vertical Beam

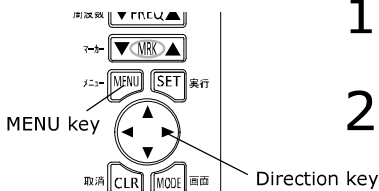
Display the vertical beam on the sonar screen.



- 1 Go to MENU -
4. DISPLAY SETUP - 3. VERTICAL BEAM.
- 2 Select [OFF] [ON].

Guideline

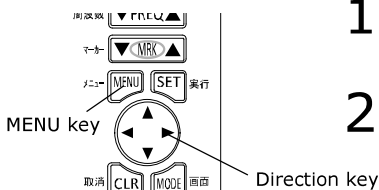
Display the beam layout on the sonar screen.



- 1 Go to MENU -
4. DISPLAY SETUP - 4. GUIDELINE
- 2 Select [OFF] [ON].

Scale Line

Display the scale lines on the sonar screen.

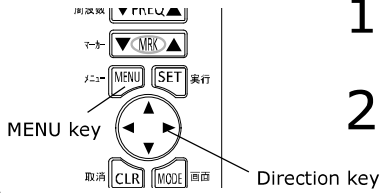


- 1 Go to MENU -
4. DISPLAY SETUP - 5. SCALE LINE.
- 2 Select [OFF] [ON].

※Please refer to "SET FROM MENU" (page10) for menu operation.

Color Tone

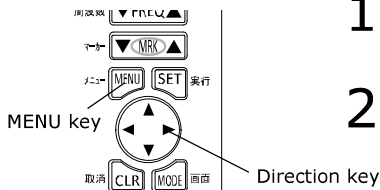
Set the screen color.



- 1 Go to MENU -
5. COLOR SETUP - 1. COLOR TONE.
- 2 Select [DAY MODE] [NIGHT MODE].

Background Color

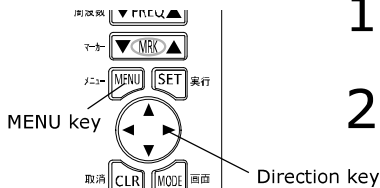
Set the screen background color.



- 1 Go to MENU -
5. COLOR SETUP - 2. BACKGROUND
- 2 Select [BLUE] [WHITE] [D.BLUE] [BLACK].

Color Configuration

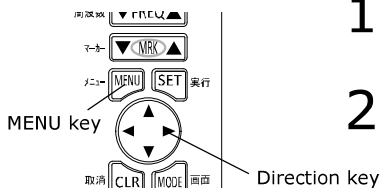
Set the color configuration.



- 1 Go to MENU -
5. COLOR SETUP - 3. COLOR CONFIG.
- 2 Select [0~7].

Color Erase

Reduce weak reflection.

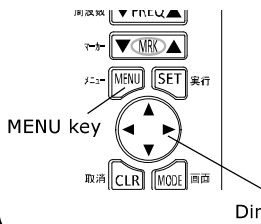


- 1 Go to MENU -
5. COLOR SETUP - 4. COLOR ERASE
- 2 Select [OFF / 1~12]

※Please refer to "SET FROM MENU" (page10) for menu operation.

Intense level

This set-up shows more color of strong reflection (signal).



1 Go to MENU -
5.COLOR SETUP-5. INTENSE COL.

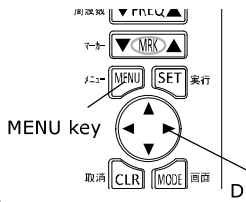
2 Select one.

STD
HI
MAX

↓ Stronger coloration.

Clutter

Reduce weak noise.



1 Go to MENU -
5.COLOR SETUP - 6. CLUTTER.

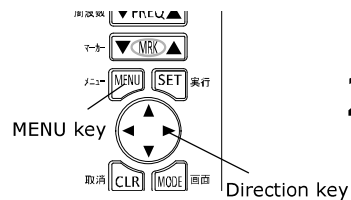
2 Select one.

STD
1
2
3

↓ Less noise toward higher number.

Sonar Mode

Select the image processing method for the sonar.



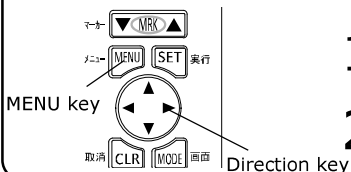
1 Go to MENU -
5. COLOR SETUP - 7. SONAR MODE.

2 Select [0 , 1]

0: Detailed fish school can be displayed.
1: Bold image is applied for showing the fish school.

Color Bar

Select whether to display the color bar on the screen.



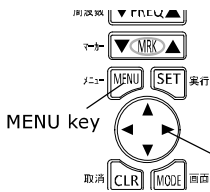
1 Go to MENU -
5. COLOR SETUP - 7. COLORBAR.

2 Select [ON, OFF]

※Please refer to "SET FROM MENU" (page10) for menu operation.

Auto Range Max. Depth

Set-up the max. depth when using auto range.
If you intend to use at deeper than the configured value,
set a deeper value than the actual depth or switch to MNL mode.

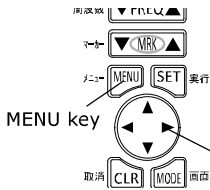


1 Go to MENU -
6. DETECTION SETUP - 1. AUTO RANGE MAX.

2 Select from
[30m] [50m] [100m] [150m] [200m] [300m].

Clean Echo

Reduce the desynchronized noise such as other sounder, electronics noise,
air bubble, and mechanical noise.

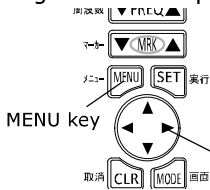


1 Go to MENU -
6. DETECTION SETUP - 2. CLEAN ECHO.

2 Select from [OFF , L , M , H].

STC

Reduce the sensitivity of shallow water area by eliminating the noise
signals such as plankton and air bubbles.



1 Go to MENU -
6. DETECTION SETUP - 3. STC.

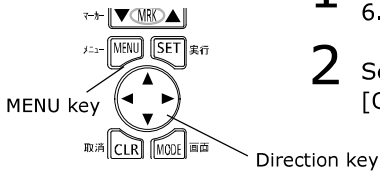
2 Set-up STC.
[0] [1] [2]

0
1 ↓ The STC becomes stronger.
2

※Please refer to "SET FROM MENU" (page10) for menu operation.

Output Power

Select the transmit power.

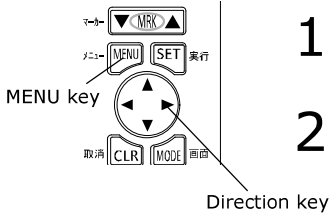


- 1 Go to MENU - 6. DETECTION SETUP - 4. OUTPUT POWER.
- 2 Select from [OFF , LOW , HIGH]

※Factory set-up: "High". Lower the output power when needed.

Transducer Installation

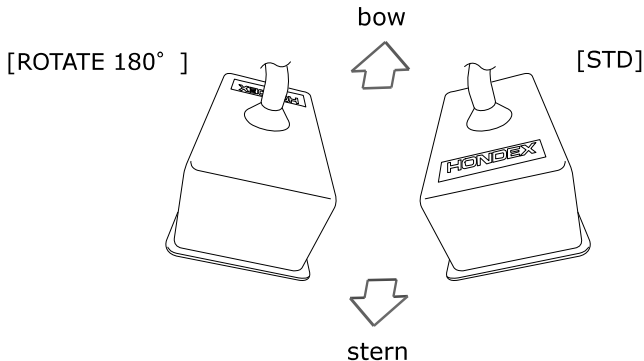
Set the installation orientation of the transducer.



- 1 Go to MENU - 6. DETECTION SETUP 5. SPECIAL SETUP - 5. ORIENTATION
- 2 Select from [STD] [ROTATE 180°]

※[STD] should be selected when the HONDEX logo on the transducer is positioned toward the stern relative to the cable.

※[ROTATE 180°] should be selected when the HONDEX logo on the transducer is positioned toward the bow side of the cable.

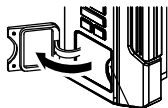


※Please refer to "SET FROM MENU" (page10) for menu operation.

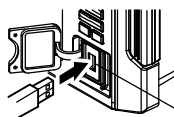
Save Image

Possible to save the displayed image into USB device.
PNG format 800x600.

- 1 Pull the card slot cover.



Pull it out of the recess
toward you

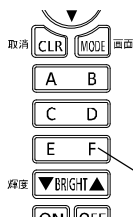


USB connector

- 2 Insert USB device into the USB connector.

- 3 Press F key to save the screen shot.
「Stored」 is shown if saving is successful.

- 4 Use PC etc to see image.



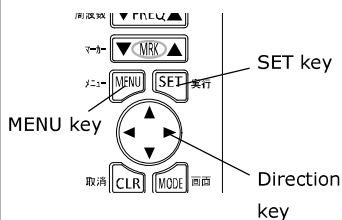
F key

※Please refer to page24 for information on removing the USB device.

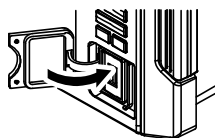
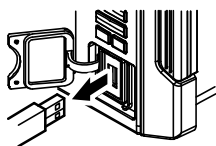
Remove USB Drive

When removing the USB memory device from this unit,
be sure to perform the following procedure.

※Omitting the following steps may cause data corruption.



- 1 Go to MENU -
7. OTHER - 1. REMOVE USB-DRIVE
- 2 When you press the [SET] key,
a "beep" sound will be heard.
- 3 Remove the USB drive.
- 4 Attach the card slot cover securely.



Attach the card slot cover securely.

Depth Unit

- 1 Go to MENU -
7. OTHER - 2. DEPTH UNIT.
- 2 Select one.
[m] [ft] [fa] [br]

Key Brightness

Possible to change the brightness of the key.

- 1 Go to MENU -
7. OTHERS - 3. KEY BRIGHTNESS.
- 2 Select from
[DARK] [BRIGHT]

※Please refer to "SET FROM MENU" (page10) for menu operation.

Local Time Correction

Correct the time to match your local timezone.

- 1 Go to MENU - 7. OTHERS -
4. CORRECTION-3. LOCAL TIME CORRECT.
- 2 Set-up Local timezone.

Voltage Correction

Correct the voltage when indicated voltage differs from actual one.

- 1 Go to MENU - 7. OTHER -
4. CORRECTION-3. VOLTAGE CORRECT.
- 2 Set-up voltage.

Water Temp Correction

Correct the water temperature.

- 1 Select MENU - 7. OTHER -
4. CORRECTION-2. TEMP CORRECT.
- 2 Set-up water temperature.

Initial

- 1 Go to MENU - 7. OTHER - 7. INITIAL.
- 2 Press SET key to start the initialization.
Turn the power on again after initialization.

MENU

| Menu Item | | ※ Factory set-up |
|-------------------------------|---------------------------|------------------------------------------------------------------------------------------------------------------------------|
| 1. FREQ | (→P.17) | 140kHz, 160kHz, 180kHz, 200kHz |
| 2. TRANSMIT | (→P.17) | ON, OFF |
| 3. AUTO MODE | (→P.17) | MANUAL, AUTO |
| 4. DISPLAY SETUP | 1. DISPLAY (→P.17) | WIDE SPOT, LEFT RIGHT |
| | 2. BOTTOM RING (→P.18) | OFF, ON |
| | 3. VERTICAL BEAM (→P.18) | OFF, ON |
| | 4. GUIDELINE (→P.18) | OFF, ON |
| | 5. SCALE LINE (→P.18) | OFF, ON |
| | 5. DEPTH DIGIT | S, M, L, LL |
| 5. COLOR SETUP | 1. COLOR TONE (→P.19) | DAY MODE, NIGHT MODE |
| | 2. BACKGROUND (→P.19) | BLUE, WHITE, D.BLUE, BLACK |
| | 3. COLOR CONFIG (→P.19) | 0, 1, 2, 3, 4, 5, 6, 7 |
| | 4. COLOR ERASE (→P.19) | OFF, 1, 2, 3, 4, 5, 6, 7, 8, 9, 10, 11, 12 |
| | 5. INTENSE COL (→P.20) | STD, HI, MAX |
| | 6. CLUTTER (→P.20) | STD, 1, 2, 3 |
| | 7. SONAR MODE (→P.20) | 0, 1 |
| | 8. COLOR BAR (→P.20) | ON, OFF |
| 6. DETECTION SETUP | 1. AUTO RANGE MAX (→P.21) | 30m, 50m, 100m, 150m, 200m, 300m |
| | 2. CLEAN ECHO (→P.21) | OFF, L, M, H |
| | 3. STC (→P.21) | 0, 1, 2 |
| | 4. OUTPUT POWER (→P.22) | OFF, LOW, HIGH |
| ※Advanced knowledge required. | | Adjust the reflection strength for sea bottom detection. |
| 5. SPECIAL SETUP | 1.MIN DEPTH LV | -20dB ~ -1dB, 0dB, 1dB ~ 12 dB |
| | 2.DEPTH BLINDOZONE | Oscillation line removal width during depth measurement. NARROW, STD, WIDE |
| | 3.AUTO CORRECT | GAIN-5 ~ -1, 0, 1 ~ 5 |
| | 4.BANDWIDTH | WIDE, STD, NARROW, NARROWEST |
| | 5.ORIENTATION (→P.22) | STD, ROTATE 180° |
| | 6. SENSOR GAIN | Adjust the detailed sensitivity of the sensor. BELOW, 30°, 90°, 150°, 210°, 270°, 330° (-20dB~-1dB, 0dB, 1dB~20dB) |

| | | |
|----------|-------------------------------|--------------------------------------------------------------------------------------------------------------------------------------|
| | 7. FREQ GAIN | Adjust the sensitivity of the sensor for each frequency. 140kHz, 160kHz, 180kHz, 200kHz. (-20dB ~ -1dB , 0dB , 1dB ~ 20dB) |
| 7. OTHER | 1.REMOVE USB-DRIVE (→P. 23) | |
| | 2. DEPTH UNIT (→P. 24) | Fa, br, m, ft |
| | 3. KEY BRIGHTNESS (→P. 24) | DARK, BRIGHT |
| | 4. CORRECTION | |
| | 1.LOCAL TIME CORRECT (→P. 25) | |
| | 2.TEMP CORRECT (→P. 25) | 0.0°C(°F)(-3.0~+3.0°C(°F)) |
| | 3.VOLTAGE CORRECT (→P. 25) | 0.0V (-5.0V~+5.0V) |
| | 5. EXT TERMINAL | |
| | 1. EXT SYNC | OFF, ON |
| | 2.NMEA PORT BAUD RATE | 4800, 9600, 38400 |
| | 6. SIMULATION | OFF, ON |
| | 7. INITIAL (→p. 25) | |
| | 8. LANGUAGE | |

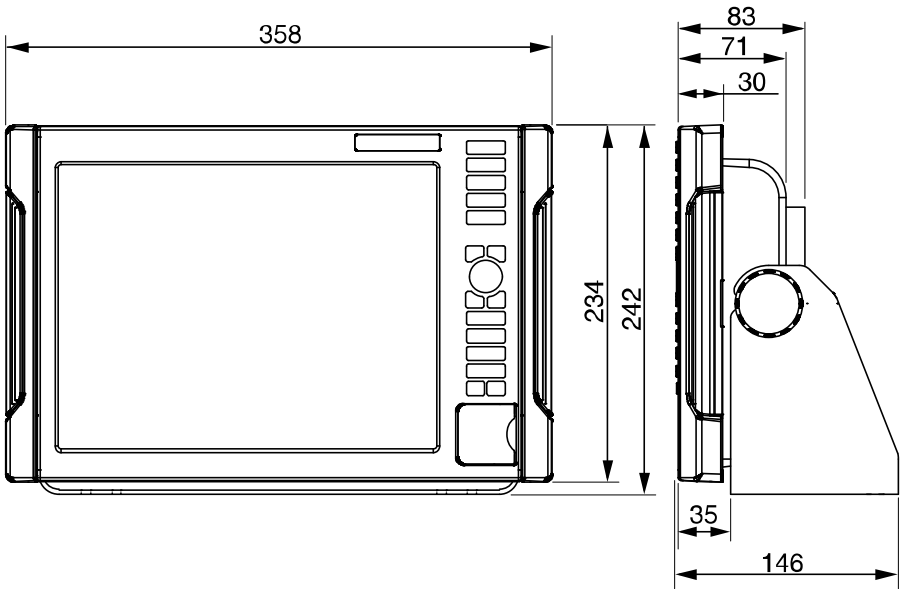
REFERENCE DOCUMENT

| | |
|--------------------------------------|----|
| DIMENSIONAL DRAWING | 29 |
| CONNECTION WITH MAIN UNIT..... | 30 |
| MAIN UNIT INSTALLATION..... | 31 |
| BUILT-IN INSTALLATION..... | 32 |
| TRANSDUCER INSTALLATION..... | 34 |
| WATER TEMP SENSOR INSTALLATION | 36 |
| STANDARD CONFIGURATION | 37 |
| OPTIONS | 38 |
| TROUBLE SHOOTING | 39 |
| SPECIFICATIONS..... | 41 |

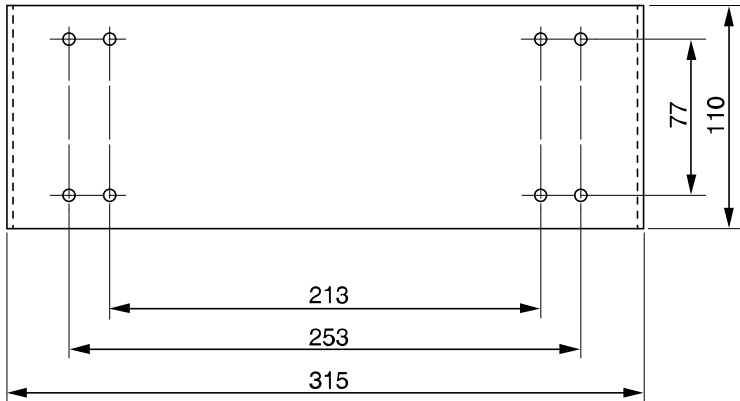
DIMENSIONAL DRAWING

MAIN UNIT

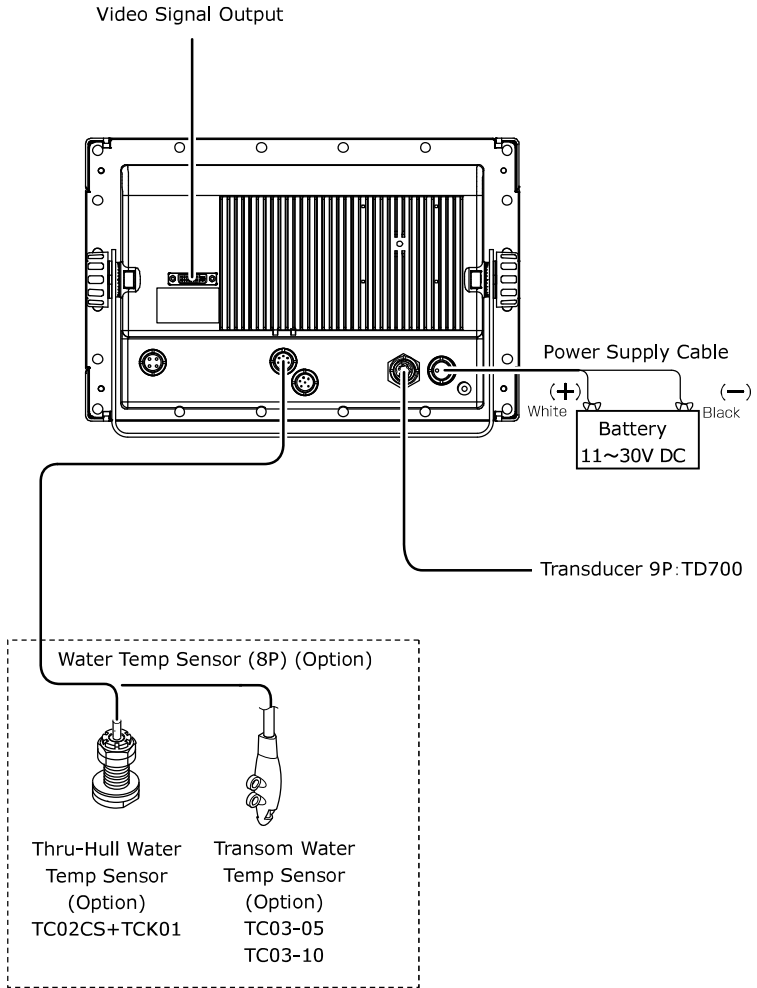
Unit : mm



BRACKET



CONNECTION WITH MAIN UNIT



MAIN UNIT INSTALLATION

⚠ WARNING

- Install the unit firmly.
If not, it may cause the human injuries.
※ Install the unit correctly according to the following instruction.

⚠ CAUTION

- Do NOT install the unit in locations exposed to direct rain or water splashes.
The DVI connector on the rear of the unit is not waterproof.
Therefore, do not remove the cover when it is not in use.
It causes the firing and electric shock.

[Procedure of Installation]

<Installation of Main Unit>

Fix the unit with enclosed screws by using bracket holes (4 locations).
Refer to the picture below.

<Positioning>

Fix the unit with mounting bracket and fixation spot. Put the mark.

※ Leave some room in the backside of unit for cable connections.

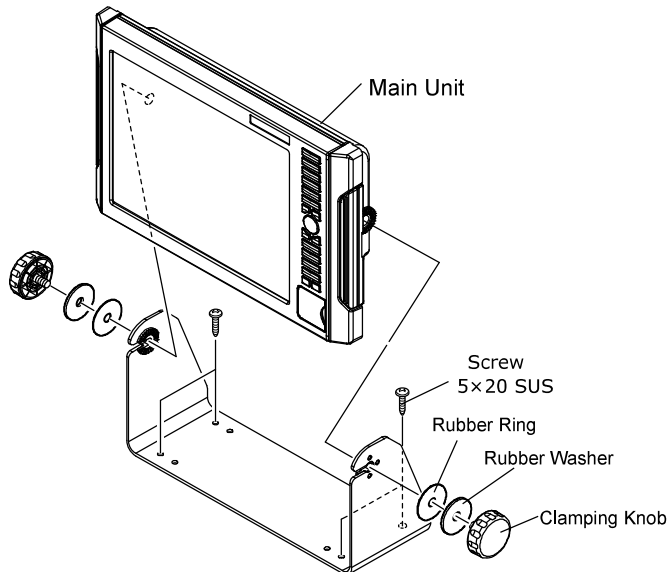
<Installation of Bracket>

Fix it with enclosed screws by using 4 holes on the bracket.

※ The cutting slits for both edges of bracket face to rear side.

<Bracket Installation>

Refer to the picture below and fix the unit.



BUILT-IN INSTALLATION

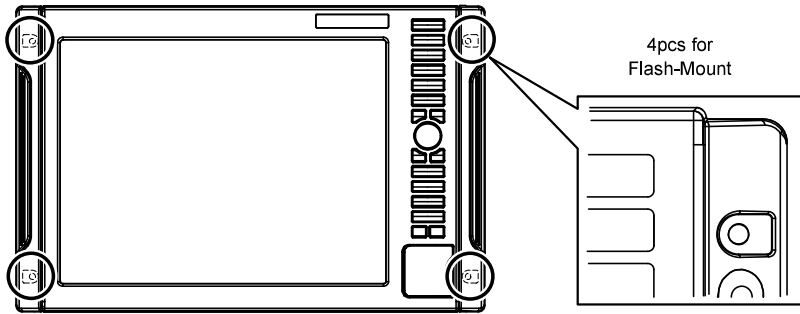


WARNING

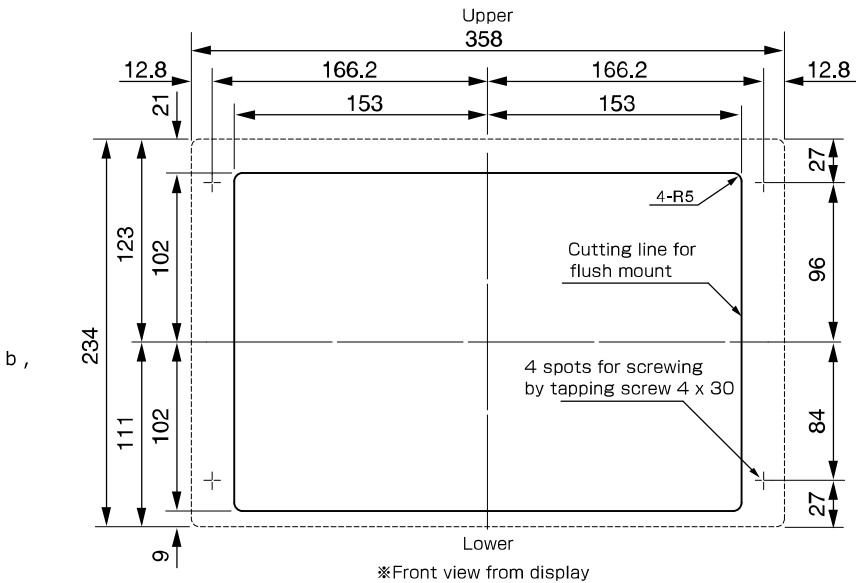
- Install the unit firmly.
If not, it may cause the human injuries.
- ※ Be sure to follow the instruction below and official installation method.

[Procedure]

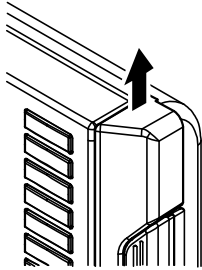
Fix the unit by using 4 holes on the front panel.



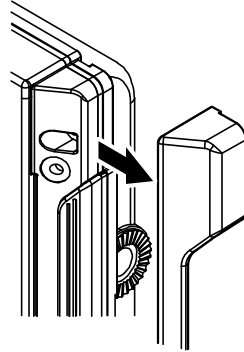
1. Refer to the following figure for fixation holes.



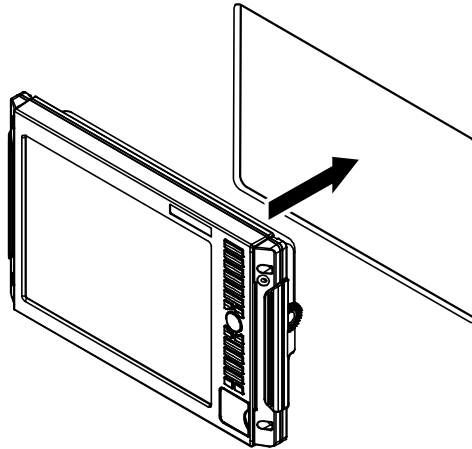
2. Raise 2pcs side covers.



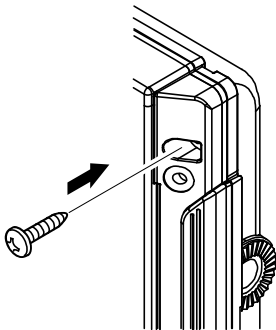
3. Remove the covers.



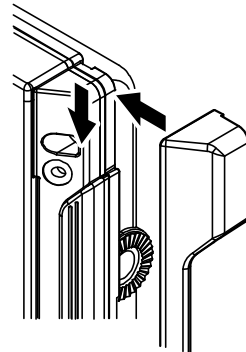
4. Flash-mount it.



5. Fix with 4pcs 4×30 screws.



6. Put the side covers back.



TRANSDUCER INSTALLATION

⚠ DANGER

- Any works on the vessel are very unstable and risky. Installation/maintenance of transducer should be handled after landing the vessel on ground or fixing the vessel at shipyard etc. If not, it may cause serious injuries.

⚠ WARNING



- Water proof treatment is required for Thru-Hull installation. If not, it causes the marine accident.
- Do not operate the electronic tools with wet hands. It causes electronic shock.

[Installation Method]

The following installations can be applied for conventional transducers.

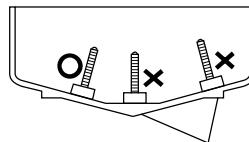
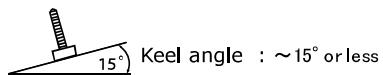
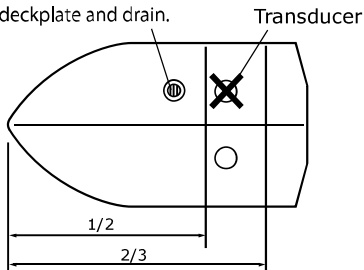
Please refer to each instruction.

1. Thru-Hull

※These methods prohibit the use of aluminum vessels for the risk of corrosion.

※Be careful about the following points when using method 1

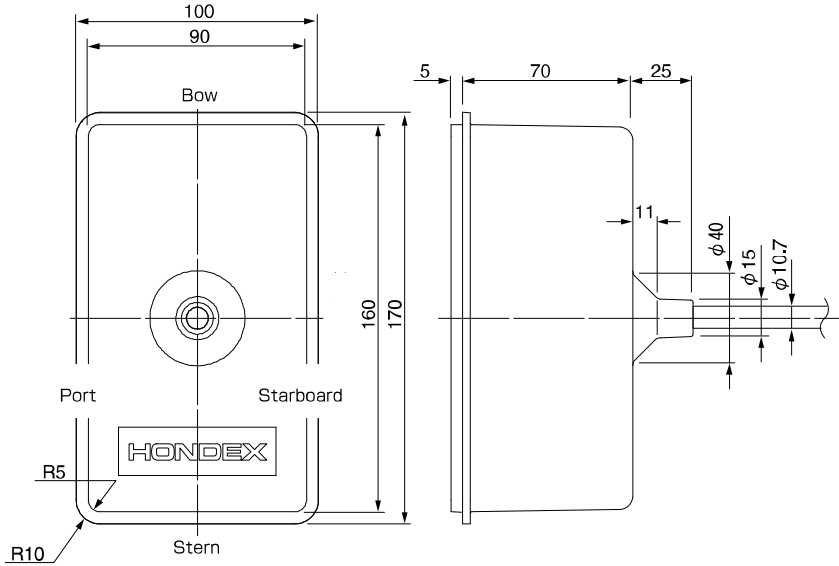
No protruding object in front of transducer such as screw out deckplate and drain.



Do not install the transducer at the locations having obstruction like keel etc.

【Transducer Orientation】

The transducer used in this unit is specifically designed and therefore has a designated mounting orientation. Please ensure that it is installed in the correct direction as shown below. Installation should be performed by your dealer or a qualified technician.



The side of the transducer with the "HONDEX" logo should face toward the stern of the vessel. When installing, make sure the "HONDEX" logo is oriented toward the stern.

This transducer is capable of 360-degree detection from the transmitting surface, so please install it in a location free from surrounding obstructions.

WATER TEMP. SENSOR INSTALLATION

※Water temp sensor: Option

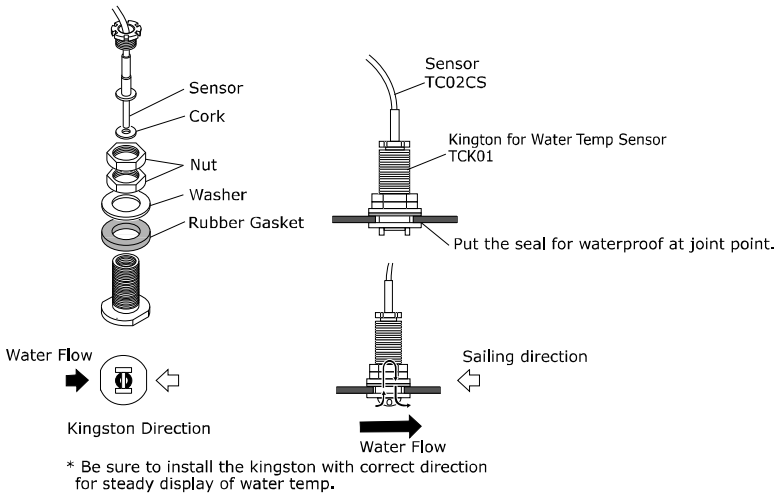
⚠ DANGER

- Any works on the vessel are very unstable and risky.
Installation/maintenance of water temp sensor should be handled after landing the vessel on ground or fixing the vessel at shipyard etc. If not, it may cause serious injuries.
- Do not operate the electronic tools with wet hands.
It causes electronic shock.

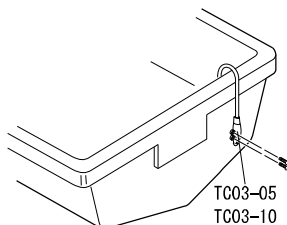
【Installation of Thru-Hull Water Temp Sensor (15m)】

※For FRP vessel only.

(The use of this sensor is prohibited for aluminum vessels due to the risk of corrosion.)

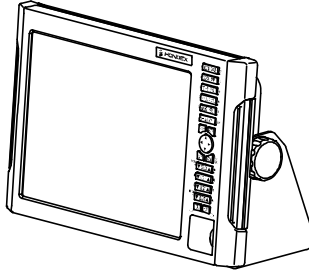


【Installation of Transom Water Temp Sensor】



STANDARD CONFIGURATION

Main Unit 12.1"



- Bracket 1pc
- Clamping Knob 2pcs
- Rubber Washer 2pcs
- Bracket Washer 2pcs

Screws for Main Unit

5 × 20 SUS × 4pcs

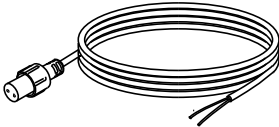


Screws for Remote

4 × 30 SUS × 4pcs

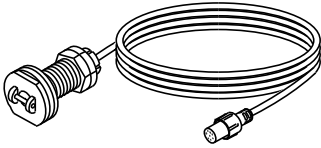


Power Supply Cable (DC07) 2P 2m

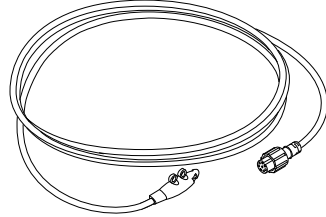


OPTIONS

Thru-Hull Water Temp Sensor
(TC02CS+TCK01) (8P 15m)



Transom Water Temp Sensor
(TC03-05) (8P 5m)
(TC03-10) (8P 10m)

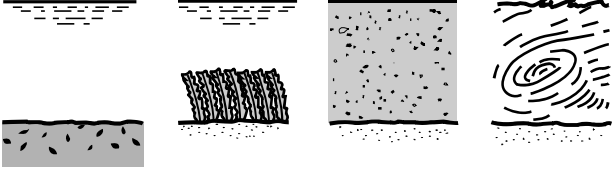


TROUBLE SHOOTING

- When the unit has any problems, please check the following points before returning the unit for repair.

| Symptom | Cause | Remedy |
|---------------------------------------------------|-----------------------------------------------------------------------------------------------------------------------------------------------------------------------------------------------------------------------------------------------------------------------------------------------------------------------------------------------------------------------------------------------------|-------------------------------------------------------------------------------------------------------------------------------------------------------------------------------------------------------------|
| Power cannot be turned ON. | Voltage of battery is lower than standard value (11V). | Recharge the battery. |
| | Contact of power connector is poor. | Retighten it. Remove and clean the rust/dust. Replace it in the case of corrosion. <ul style="list-style-type: none"> •Replace the power cable. •Replace the connector on the unit. |
| | Wrong connection of power. Opposite polarity + - . | Check the polarity and connect it properly. |
| | Cut the wire inside power cable. | Exchange to new power cable. |
| | Blown fuse. | Send it for repair. |
| No display on screen. | Brightness is set to minimum level. | Adjust the brightness. (Refer to [SCREEN BRIGHTNESS]) |
| Bottom or fish cannot be displayed at all. | Contact problem with transducer connector. | Retighten the connection. Remove/clean the rust/dust. Replace it in the case of corrosion. <ul style="list-style-type: none"> •Exchange transducer. •Send it for repair. |
| | <Problem with Transducer> Check followings and replace it in the case of actual problems. <ol style="list-style-type: none"> 1. It's normal if you hear the sound like "Bo Bo" from the surface of transducer. 2. It's normal if rain like dots appears on the transducer surface after setting the sensitivity and depth to the max and rubbing the transducer surface. | |
| | Transducer is not immersed enough into the water. | Adjust the transducer installation so that it is always beneath water surface. |
| | Internal liquid is not enough inside the case. | Add enough liquid to immerse the transducer. |
| Image does not appear sometimes. | Transducer is not immersed enough into the water. | Adjust the transducer installation so that it is always beneath water surface. |
| | Problem with the transducer installation causes the image problem due to air bubbles | Check the installation of transducer. |

| | | |
|-----------------------------------------------------|--------------------------------------------------|----------------------------------------------------------------------------|
| | at speeding the vessel. | |
| | Influence from other vessel causing air bubbles. | Move to other location or wait until air bubble disappears. |
| Bottom or fish school is not displayed well. | Too low sensitivity. | Increase the sensitivity. Or, set to auto gain (auto sensitivity control). |

| Symptom | Cause | Remedy |
|-----------------------------------------------------|-------------------------------------------------------------------------------------------------------------------------------------------------------------------------------------------|-----------------------------------------------------------------------------------------------------------------------|
| Bottom or fish school is not displayed well. | Rubbish and weed attached on the transducer surface. Dirty bottom or liquid. | Remove the excrescence. Remove the dirt from bottom and exchange the liquid. |
| | <p>Water and environmental conditions may cause the problem with image which is not problem at all.</p>  | |
| | Too high clutter. | Activate low reflection color. Refer to [CLUTTER] |
| Too much noise. | Too high sensitivity. | Lower the sensitivity. Set to auto gain (auto gain control) |
| | Interference with other vessel's echo sounder. | Noise disappears after other vessel moves far away.. |
| | Noise from engine. | Change the routing of cables such as transducer and power cables. (keep distance from the engine as far as possible.) |

SPECIFICATIONS

| | | |
|--------------------|------------------------------------------------------|------------------------------------------|
| Display | | HE-1270 |
| | Display | 12.1" TFT Color LCD |
| | Display Style | Landscape |
| | Number of Pixel | 800 × 600 |
| | Operating Voltage | DC11V~30V |
| | Dimension of Main | 242(H)×358(W)×146(D) |
| | Weight of Main Unit | Approx. 3.6kg |
| Echo Sounder | Frequency(kHz) | 140, 160, 180, 200(kHz) |
| | Depth Range | 0~300m |
| | Auto Mode | OFF/ON |
| | Transmit | OFF/ON |
| | Background Color | 4 Colors (Black, Blue, White, Dark Blue) |
| | Color Configuration | 8 Patterns |
| | Depth Unit | Meter / Feet / Fathom / Brazas |
| | Scale Line | OFF/ON |
| | STC | 0/1/2 |
| | Output Power | OFF/LOW/HIGH |
| Options | | |
| Water Temp. Sensor | Thru-Hull :TC02CS+TCK01 Transom :TC03-05, TC03-10 | |



OVERSEAS SALES DIVISION

20 Oyamazuka, Oiwa-cho, Toyohashi, Aichi 441-3193, Japan

Tel: +81-532-41-2512

<https://www.honda-el.co.jp/en/marine/>

Jun. 2026 3rd Edition