



# Probes

## Micro Convex



HCS-572M  
9.0/7.5/5.0MHz

## Linear



HLS-575M  
10.0/7.5/5.0MHz

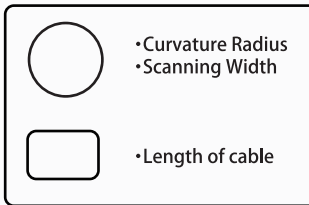
## Convex



HCS-436M  
5.0/3.5/2.8MHz



HCS-436MSC  
5.0/3.5/2.8MHz  
※Single Crystal



# Specifications

Scanning Method	Convex /Linear Electronic Scan	
Number of Probe Channel	96 Channels,128 Channels	
Number of Simultaneous Drive	Transmitter	64 Channels (Max)
	Receiver	32 Channels (Max)
Display Mode	B Mode,B/B Mode,B/M Mode,B/Z Mode,M Mode	
Range 3.5MHz	0-2cm~0-24cm(1cm step Adjustable)	
5MHz or more	0-2cm~0-16cm(1cm step Adjustable)	
Focusing Method	4-Stages Transmission Focus Continuous Dynamic Receiving Focus	
Rated Ultrasound Frequency	2.8,3.5,5.0,7.5,9.0,10.0MHz	
Display Monitor	12.1inch color LCD	
Acoustic Power Adjustment	20-100% (10% Step Adjustable)	
Image Display	256 Levels	
Image Adjustment	Up/Down,Left/Right	
Doppler	CFM(Color Flow Mapping),PD(Power Doppler), PW(Pulse Wave Doppler)	
Image Adjustment	B-Gain	36-100dB (1dB Step Adjustable)
	M-Gain	36-100dB (1dB Step Adjustable)
	B-Dynamic Range	35-95dB (1dB Step Adjustable)
	M-Dynamic Range	35-95dB (1dB Step Adjustable)
	STC	8-Level Slide Control
	γ correction	5 type
	H-res:	OFF,Detail1,Detail2,Detail3,
	(Image Enhancement)	Mild,Resolution,Penetration, Clarity,Boundary,Anatomy
Sweep Speed in M Mode	1/1, 1/2, 1/4, 1/8, 1/16(*) *B/M-Mode: (1/1) is 1 second per frame. *M-Mode : (1/1) is 2 seconds per frame.	
Measuring Function	Distance : 8 Measurements Area/Circumference : 4 Measurements Volume : 1 Measurements	
Diagnosis/Graph Display	DGSD, DCRL, DHD, DBD, cHD, cBD	
Data Storage	Still Image (JPEG): Internal (200 Images max.) / External USB memory ditto (DICOM) : External USB memory Moving Image (AVI) : Internal (10 videos max.) / External USB memory	
Character Display	Hospital Name (40 Characters), ID Information (ID: 26 Characters, Name: 30 Characters, Age), Date, Time, Probe Type, Current Setting Information	
Power Source	AC Adapter: AC100-240V,50Hz/60Hz 15VDC,100VA	
Dimension	500mm(Width) × 480mm(Depth) × 1200mm(Height)	
Net Weight	Net Weight: Approx. 20kg (Excluding probe)	
Probes	Micro Convex Probe 9.0/7.5/5.0 MHz 20R HCS-572M Convex Probe 5.0/3.5/2.8 MHz 60R HCS-436M, HCS-436MSC Linear Probe 10.0/7.5/5.0MHz 50mm HLS-575M	
Accessories	AC Adaptor, Power Cable, Ultrasound Gel	

# HS-2700V

12.1 inch



JAPAN

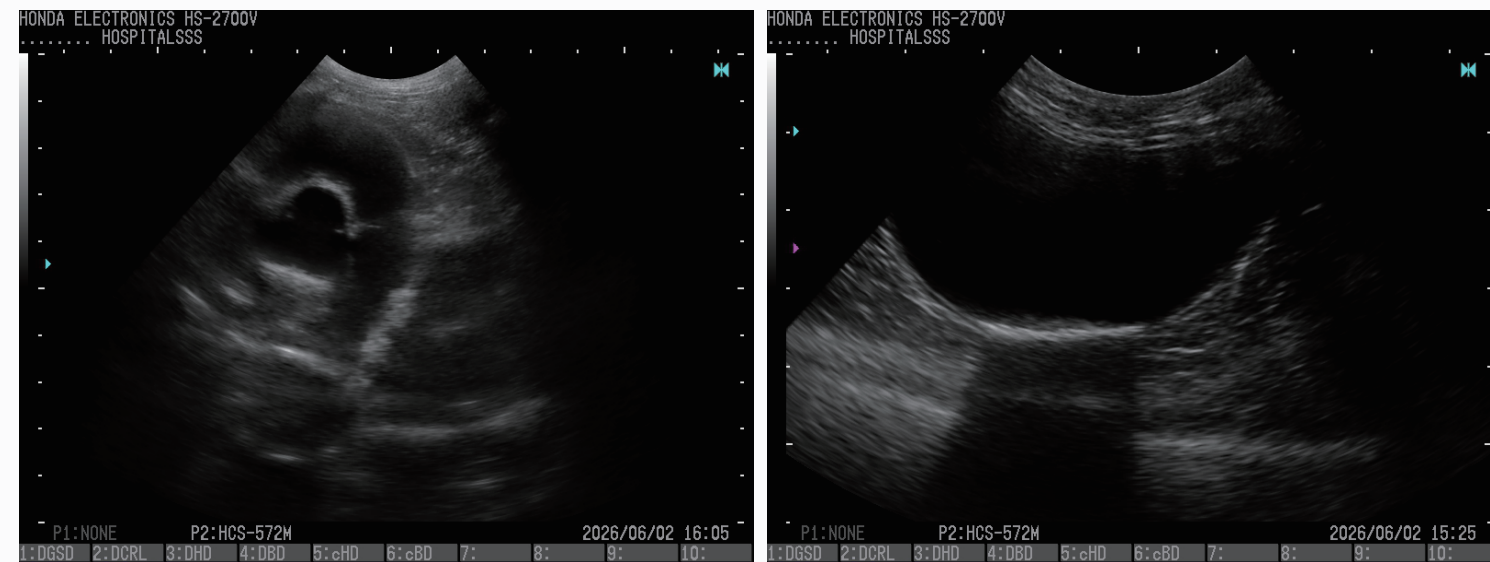


1. Copying all or part of this manual without permission is strictly forbidden  
2. The content of this manual are subject to change without notice in future.  
3. Please contact the distributor if you have any questions or any comments about this manual.

Attention  
• Contents of this catalog are as of June 15, 2026.  
• The specification and appearance are subject to change without notice for improvement.  
• Actual colors products and colors of this catalog may a little different cause of printing.

# HS-2700V

HS-2700V is designed to meet the needs of today's medical professionals, combining exceptional diagnostic accuracy. Experience sharper imaging and effortless usability, all in one advanced system.

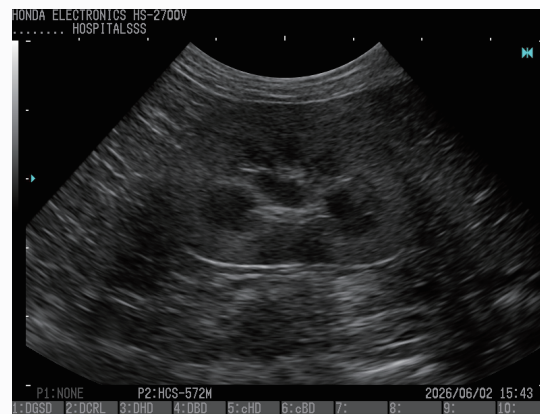


Body Part: Heart(Dog)

Body Part: Bladder(Cat)

## H-res (Our Resolution Technology)

Featuring advanced image processing technology, the system delivers optimal settings for any observation purpose with effortless operation. Select the presets for both deep and superficial imaging with ease.



## Large Screen

12.1-inch screen has been expanded to maximize the display of scan images. To ensure clarity, the number of permanently displayed items has been minimized, reducing text overlap with images. \*1, \*2

\*1 – Compared to the previous version.

\*2 – Customizable settings allow changes to the permanently displayed items.

## Boot time

Boot time is reduced for faster startup to help ensure a quick start to examinations.\*3

\*3– Startup time may vary depending on the amount of data stored internally.

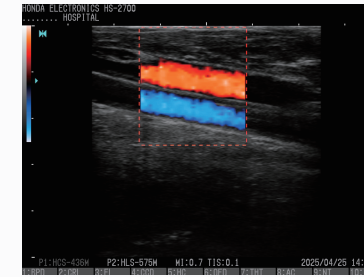
## Direct Access Key

The direct access keys assigned to the keyboard allow you to change various settings without opening the menu. This minimizes operation time and contributes to increased examination efficiency.

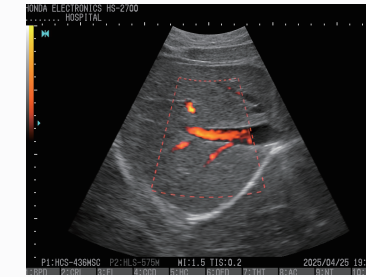


## Doppler applications

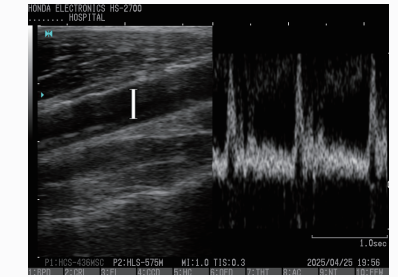
HS-2700 supports CFM (Color Flow Mapping), PD (Power Doppler) and PW (Pulse Wave Doppler) modes. PW mode includes Doppler sounds.



CFM(Color Flow Mapping)



PD(Power Doppler)



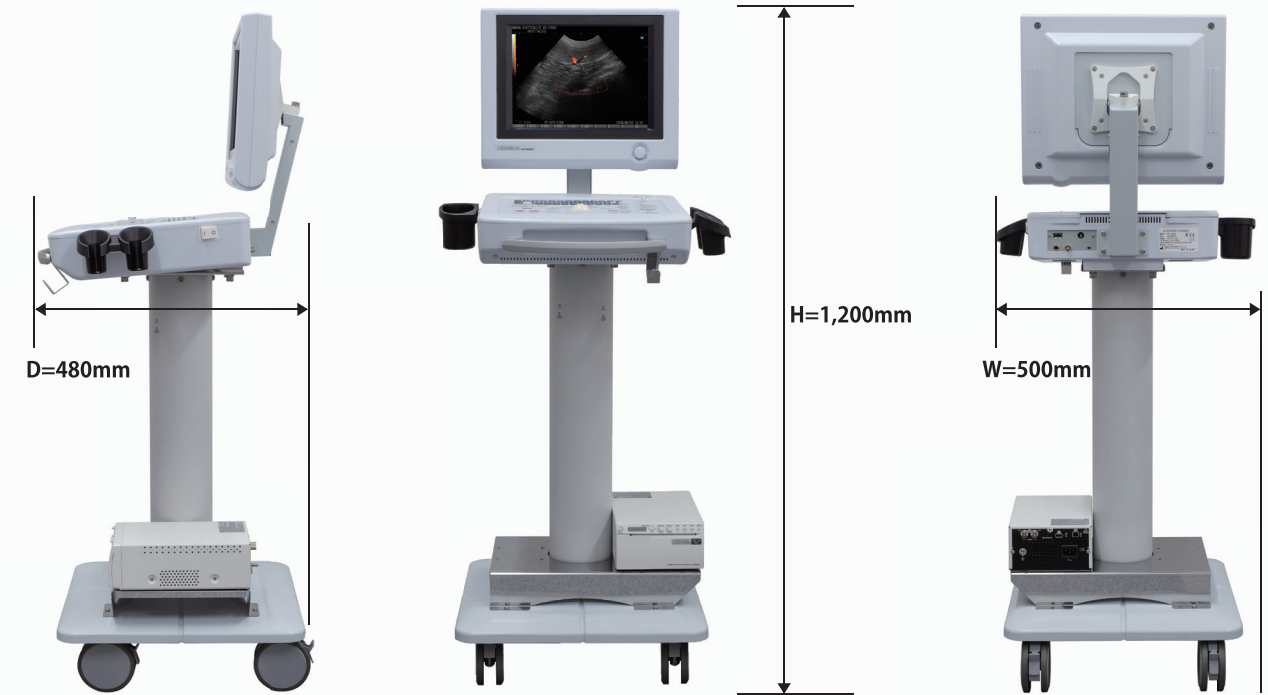
PW(Pulse Wave Doppler)

## Compact and lightweight design

With a slim profile of 500mm (W) x 480mm (D), this device is designed to save space in examination rooms and bedside.

At just 20kg, it is both compact and easy to move, making it ideal for use in various settings.

**20kg**



※Video printer is not included.

## HONDA ELECTRONICS

Honda Electronics Co., Ltd. has been a pioneer in ultrasound technology, developing various technologies and products since its founding in 1956. In 1980, the company began developing ultrasound diagnostic devices. With years of accumulated expertise, its products have been certified and sold in various countries.

